

# Kaon

# Best Practices for Delivering the Best IP Video Performance

Presentation with Minerva  
April 29, 2021

## The opportunity of IP Video:

- Modernize the Video Product
- New video services
- Video to new devices
- Enhanced advertising
- Low-cost or no-cost CPE

## The opportunity of Managed Wi-Fi:

- Modernize the Broadband Product
- New broadband services
- Improved operations
- Optimize IP Video delivery



## The challenges of IP Video:

- Ecosystem stability
- Bandwidth budget during simulcast
- Device diversity and operations

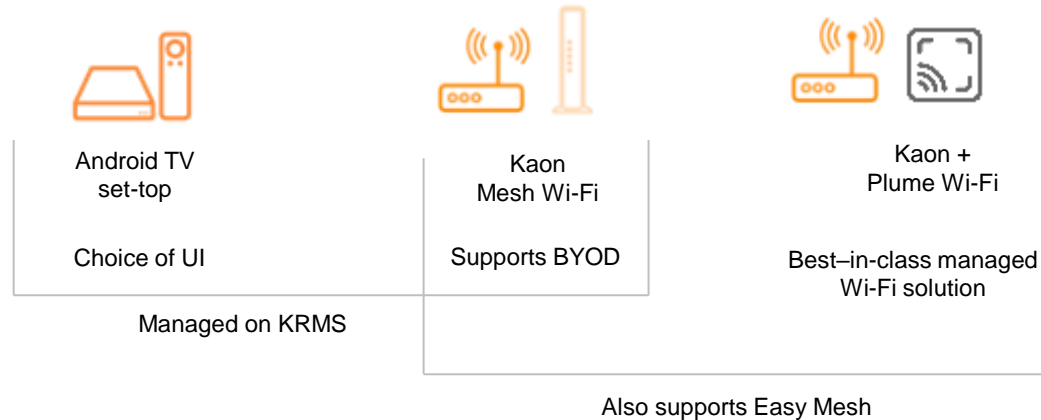
## The challenges of Managed Wi-Fi:

- Ecosystem business models
- Fierce retail competition
- Operations silos

# Kaon Universal Whole Home

In a dynamic marketplace for video, operators need reliable, scalable solutions that keep your customers connected and entertained.

A universal Android TV solution, combined with a flexible managed Wi-Fi solution, enables operators to have confidence in their choices of CPE and ecosystem.



# Company Overview



HQ in Seoul,  
Korea (Publicly  
Listed)

**20+** Years of Expertise

**460** Total Employees

**280** R&D Engineers

Strictly Confidential and Intellectual Property of KAON



# Universal Whole Home Solution

Kaon Video and Broadband devices provide operators with flexibility and choice.

Video: Set-top with Android TV or RDK

- One device, one certification – and choice of IP Video ecosystem
- Integrate with Managed Wi-Fi for **whole-home** self-install / self-care
- Managed by KRMS for screen zero, app delivery, firmware update

Broadband: Managed Wi-Fi

- One implementation, one device – and choice of Managed Wi-Fi ecosystem
- All-in-one or stand-alone options
- Integrate with Universal STB for **whole-home** self-install / self-care

# Android TV Set-top

- Delivers your choice of IP Video solution
- Operator Tier Lite
- Screen zero and launch on resume-from-stand-by
- Standard launcher, with promoted placement of the Pay TV app
- Pay TV remote control with service deep links
- Operation without subscriber log-in to Google
- HDMI CEC and TV control



# Managed Wi-Fi






A well-managed Wi-Fi network ensures the best entertainment experience for your customers.

- Flexible solution – Choose your Wi-Fi ecosystem: **Plume**, EasyMesh, Kaon Mesh
- Remote configuration and monitoring of Wi-Fi services
- Automated provisioning of SSIDs, security
- Subscriber-facing applications for self-install and Wi-Fi self-care
- Mesh Wi-Fi
- Regulatory reporting

Using Kaon KRMS allows you to manage set-tops and Wi-Fi from one platform.



# Product Line-up: OpenSync / Plume aligned

	Router/Extender		DOCSIS		PON Gateway
	AR1344	AR1845	CG3000	CG3000S	PG2449
					
Wi-Fi Technology	802.11ax 2x2 2.4 GHz 4x4 5 GHz	802.11ax – Wi-Fi 6E 2x2 2.4 GHz 4x4 5 GHz 2x2 6GHz	802.11ac 4x4 2.4 GHz 4x4 5 GHz	802.11ax 4x4 2.4 GHz 4x4 5 GHz	802.11ax 4x4 2.4 GHz 4x4 5 GHz
Interfaces	1 x GbE WAN 1x1 GbE LAN	1x2.5 GbE WAN 4x1 GbE LAN 2 x VoIP 1 x USB 3.0	4x1 GbE LAN  *Wi-Fi 5 Compatible	4x1 GbE LAN	4x1 GbE LAN 2 x VoIP 1 x USB 3.0

All products compatible with KaonMesh and EasyMesh



# Product Line-up: available for immediate deployment

## KSTB2020 + KURV Remote

- Android 8
- Wi-Fi 5 2x2
- Bluetooth and RF4CE



## KSTB2100 + Kaon Voice Classic Remote

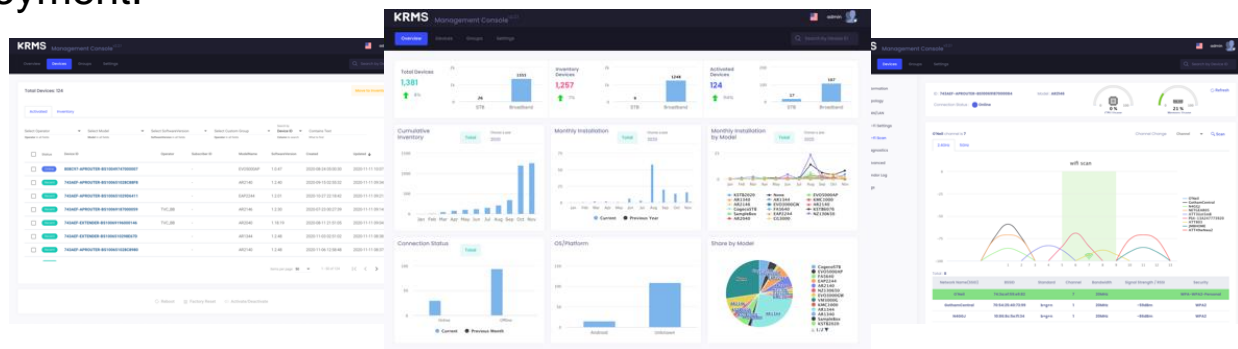
- Android 10
- Wi-Fi 5 4x4
- Bluetooth Remote (RF4CE available)



# KRMS: Kaon Remote Management System

Kaon's Remote Management System (KRMS) uses TR-069 for a simplified, single-cloud platform providing device monitoring, troubleshooting, management & analytics for set-top boxes and Wi-Fi connectivity devices.

You can easily manage a subscriber's home network for any IP Video, Cable, Fiber, or DSL deployment.



Device Information



Device Control



Group  
Management



Firmware/APK  
Management



Device Alerts

# KRMS: Kaon Remote Management System

## Video:

- Standards-based configuration and operation of a managed STB environment
- Field upgrade across IP Video ecosystems
- Configure Screen Zero and automatic app download without Google Sign-in
- PayTV deep-links through traditional remote
- Voice control through Google Assistant
- Self-install and direct fulfillment available

## Broadband:

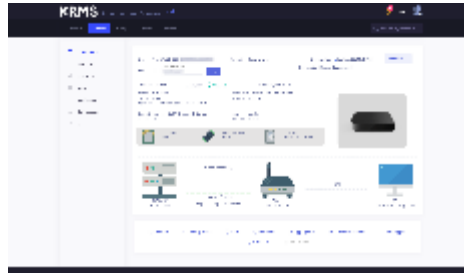
- Standards-based configuration and operation of managed Wi-Fi
- Field upgrade across mesh ecosystems, e.g., Kaon mesh > Plume
- Operator portal or API control of hosted back office
- Mobile App available for subscriber control of their home network

## Whole-home insight:

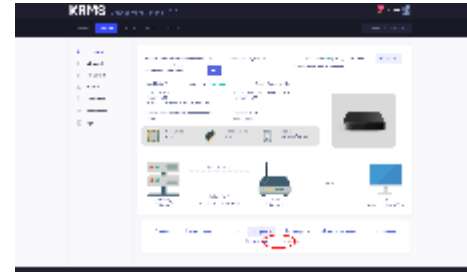
- Experience is optimized for managed Wi-Fi delivery of IP Video
- Kaon STBs and bring-your-own-device
- One management system to operate all services in the home

# KRMS: Flippability in the field

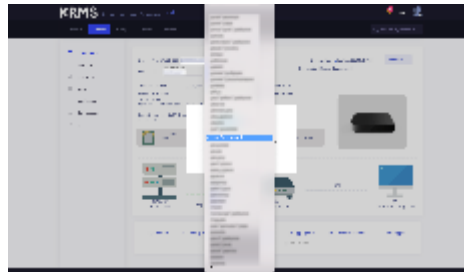
Easily flip your set-tops and routers individually or in groups in a few simple steps...



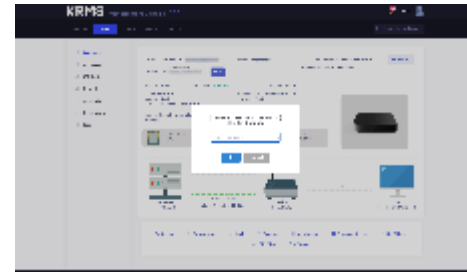
**1. Access Device Information Page**



**2. Select Operator Action from Action Menu**



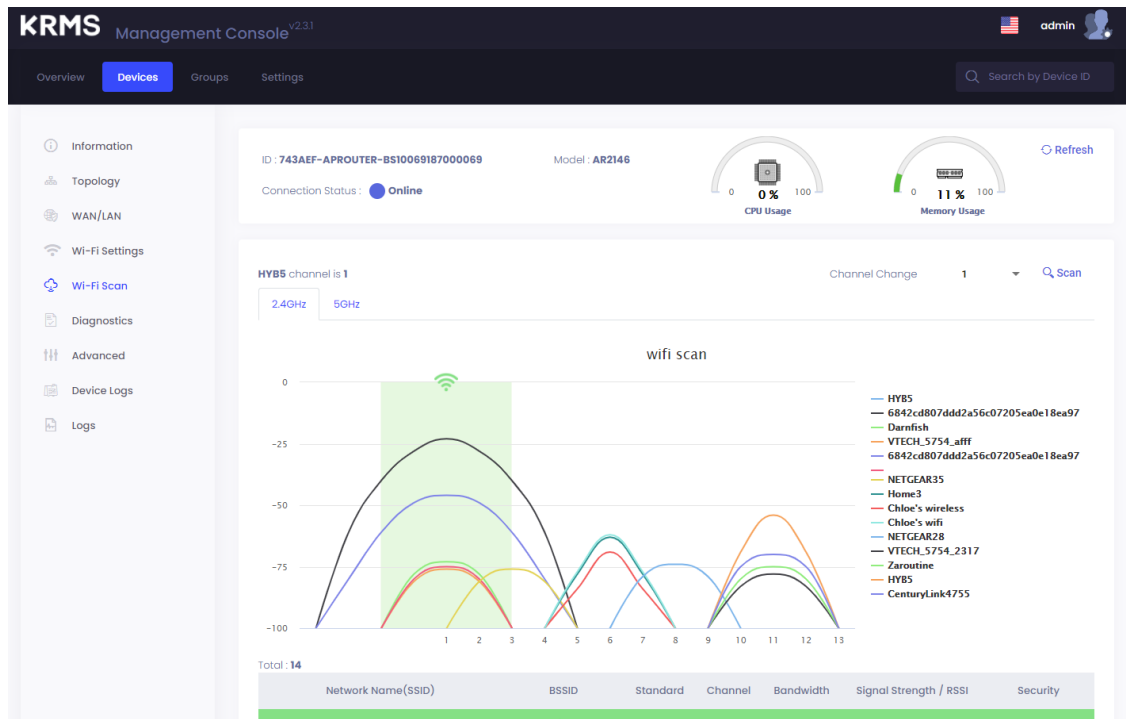
**3. Select New Operator Key from Droplist**



**4. Confirm Operator Key change**

# KRMS: Wi-Fi Performance Use Case

Improve the performance of Wi-Fi and IP Video using KRMS diagnostic tools



# Product Available Now

Kaon has a robust supply chain for 2021 fulfillment and self-install deployment

- On-shore inventory
  - Wi-Fi 6 samples and demos ready now.
  - Wi-Fi 5 inventory available through channel or direct fulfillment
- 2021 capacity
  - 10s of thousands of units per month starting June 2021
  - Lead times are still manageable to cover short shipments from other vendors
- Bundle & Save
  - The bundle discount, combined with low lead-time delivery, will help you get past supply chain issues, and help you get back to delighting your subscribers.

# Thank You

# Contact Information

## Kaon USA

Eric Hybertson, SVP and GM of USA/Canada territories

- [eric.hybertson@kaonmedia.com](mailto:eric.hybertson@kaonmedia.com)
- +1-303-908-4220

Mark Besocke, VP USA Business Development

- [mark.besocke@kaonmedia.com](mailto:mark.besocke@kaonmedia.com)
- +1-303-990-1087

[www.kaonmedia.com](http://www.kaonmedia.com)